



220 East Ann Street, Ann Arbor, MI 48104
734-995-5439 www.aahom.org



Guide to Scout Workshops

Check-In

Time 10:50am – 11:00am

Location Scout check-in table
in Museum lobby

When you check-in, you will need to share:

- The number of scouts and adults attending the workshop
- Any special needs

At check-in, you will receive one package which includes:

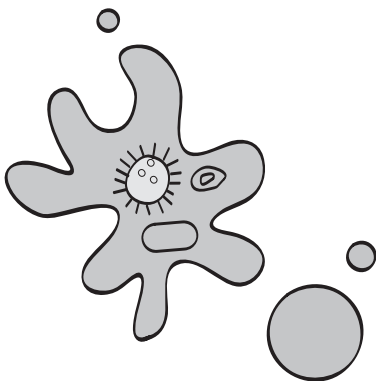
- Evaluation Form
- Badges
- List of badge requirements completed
- Groups arriving early must wait to enter the Museum until their scheduled check-in time
- Groups may check-in once all group members have arrived

Chaperones and Siblings

- Chaperones must accompany and supervise their group at all times
- Due to limited seating in workshops, only 1 adult per 5 scouts will be admitted into the workshop
- Siblings and extra adults will not be admitted into the workshop
- Siblings and extra adults are welcome to pay general admission and explore the Museum

Scout Uniforms

Scouts are encouraged to wear their uniforms.



Lunch

- There will be a 20-minute lunch break
- Groups must provide their own bagged lunch

Museum Exploration

- Groups are strongly encouraged to explore the Museum after their workshop
- Museum exploration is not included in the 11:00am – 3:30pm workshop

Museum and Store Hours

Monday – Saturday: 10am – 5pm
Sunday: 12pm – 5pm

For More Information
Visit Our Website
www.aahom.org
Contact the Scout Coordinator
734-995-5439
or education@aahom.org

Driving and Parking Guide

From the NorthWest

- Take I-96 East to US-23 South to M-14 West
- Exit at Downtown Ann Arbor (Exit #3)
- You will be heading south on North Main Street
- The 5th traffic light is Ann Street
- Turn **LEFT** onto Ann Street
- The Museum entrance is on the right, between Fourth Avenue & Fifth Avenue

From the West

- Take I-94 East to Jackson Road (Exit #172)
- Take Jackson Road east for 2.5 miles (Jackson Road becomes Huron Street)
- The 1st traffic light after Main Street is Fourth Avenue
- Turn **LEFT** on Fourth Avenue
- Go 1 block to Ann Street and turn **RIGHT**
- The Museum entrance is on the right, between Fourth Avenue & Fifth Avenue

From the South & SouthEast

- Take I-94 West to Ann Arbor-Saline Road (Exit #175)
- Turn **RIGHT** onto Ann Arbor-Saline Road, which becomes Main Street as you near the downtown area
- Go through downtown to Ann Street (the 1st street after Huron Street)
- Turn **RIGHT** onto Ann Street
- The Museum entrance is on the right, between Fourth Avenue & Fifth Avenue

From the NorthEast

- Take I-696 West to I-275 South to M-14 West
- Exit at Downtown Ann Arbor (Exit #3)
- You will be heading south on North Main Street
- The 5th traffic light is Ann Street
- Turn **LEFT** onto Ann Street
- The Museum entrance is on the right, between Fourth Avenue & Fifth Avenue

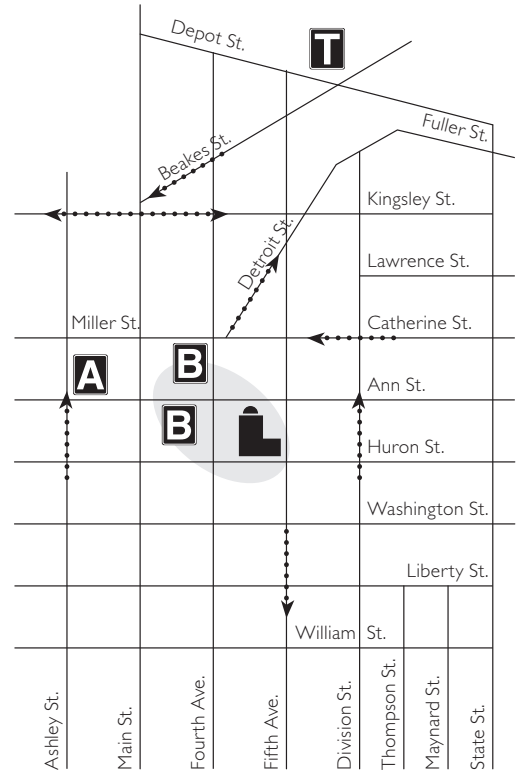
Groups may use the curb-cut area in front of the Museum to drop off their scouts and at least one adult before parking their cars.

Weekend Parking Suggestions*

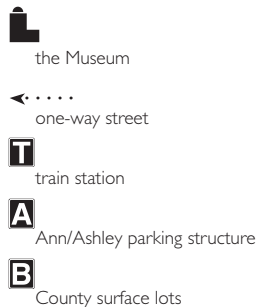
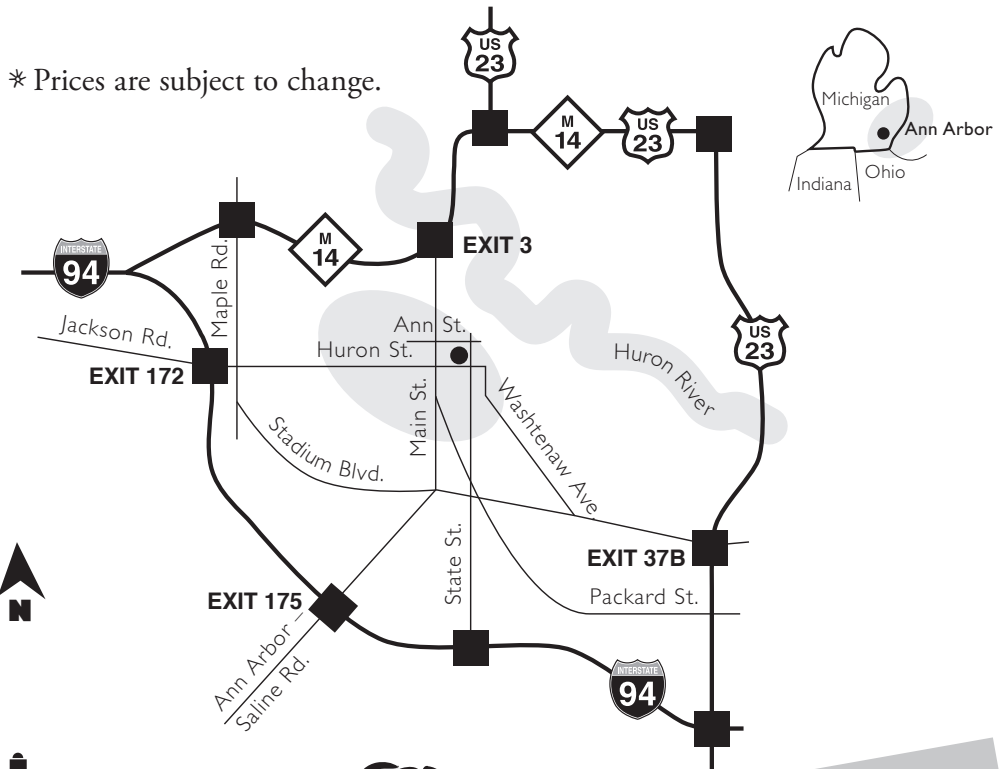
- Ann/Ashley Parking Structure – \$2 per day (Exact change only.)
- County Surface Lots – free (County surface lots fill quickly. Allow extra time and provide drivers with an alternate parking area if you plan to park in one of these lots.)

Weekday Parking Suggestions*

- Ann/Ashley Parking Structure – hourly rate



* Prices are subject to change.



For More Information
 Visit Our Website
www.aahom.org
 Contact the Scout Coordinator
 734-995-5439
 or education@aahom.org