

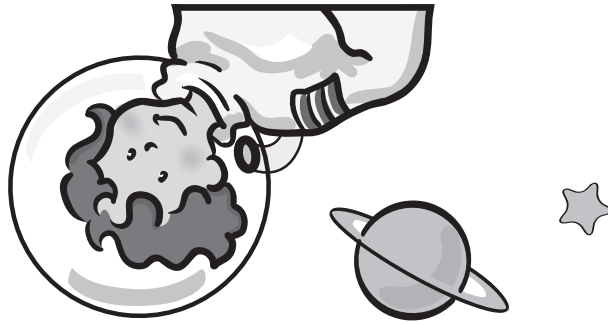


Museum

220 East Ann Street  
Ann Arbor, MI 48104

734.995.5439

www.aahom.org



# Guide to Scout Workshops



## Check-In

**Time** 12:50pm – 1:00pm

**Location** Scout check-in table  
in Museum lobby

### When you check-in, you will need to share:

- The number of scouts and adults attending the workshop
- Any special needs

### At check-in, you will receive one package which includes:

- Evaluation Form
- Badges
- List of badge requirements completed
- Groups arriving early must wait to enter the Museum until their scheduled check-in time.
- Groups may check-in once all group members have arrived.

## Scout Uniforms

Scouts are encouraged to wear their uniforms.

## Snack

- There will be a 15-minute snack break
- Groups must provide their own snack

## Chaperones and Siblings

- Chaperones must accompany and supervise their group at all times
- Due to limited seating in workshops, only 1 adult per 5 scouts will be admitted into the workshop
- Siblings and extra adults will not be admitted into the workshop
- Siblings and extra adults are welcome to pay general admission and explore the Museum

## Museum Exploration

Your program includes designated time for Museum exploration.

## Museum and Store Hours

Monday – Saturday: 10am – 5pm

Sunday: 12pm – 5pm



For More Information  
Visit Our Website  
[www.aahom.org](http://www.aahom.org)  
Contact the Scout Coordinator  
734-995-5439  
or [education@aahom.org](mailto:education@aahom.org)

# Driving and Parking Guide

## From the NorthWest

- Take I-96 East to US-23 South to M-14 West
- Exit at Downtown Ann Arbor (Exit #3)
- You will be heading south on North Main Street
- The 5<sup>th</sup> traffic light is Ann Street
- Turn **LEFT** onto Ann Street
- The Museum entrance is on the right, between Fourth Avenue & Fifth Avenue

## From the West

- Take I-94 East to Jackson Road (Exit #172)
- Take Jackson Road east for 2.5 miles (Jackson Road becomes Huron Street)
- The 1<sup>st</sup> traffic light after Main Street is Fourth Avenue
- Turn **LEFT** on Fourth Avenue
- Go 1 block to Ann Street and turn **RIGHT**
- The Museum entrance is on the right, between Fourth Avenue & Fifth Avenue

## From the South & SouthEast

- Take I-94 West to Ann Arbor-Saline Road (Exit #175)
- Turn **RIGHT** onto Ann Arbor-Saline Road, which becomes Main Street as you near the downtown area
- Go through downtown to Ann Street (the 1<sup>st</sup> street after Huron Street)
- Turn **RIGHT** onto Ann Street
- The Museum entrance is on the right, between Fourth Avenue & Fifth Avenue

## From the NorthEast

- Take I-696 West to I-275 South to M-14 West
- Exit at Downtown Ann Arbor (Exit #3)
- You will be heading south on North Main Street
- The 5<sup>th</sup> traffic light is Ann Street
- Turn **LEFT** onto Ann Street
- The Museum entrance is on the right, between Fourth Avenue & Fifth Avenue

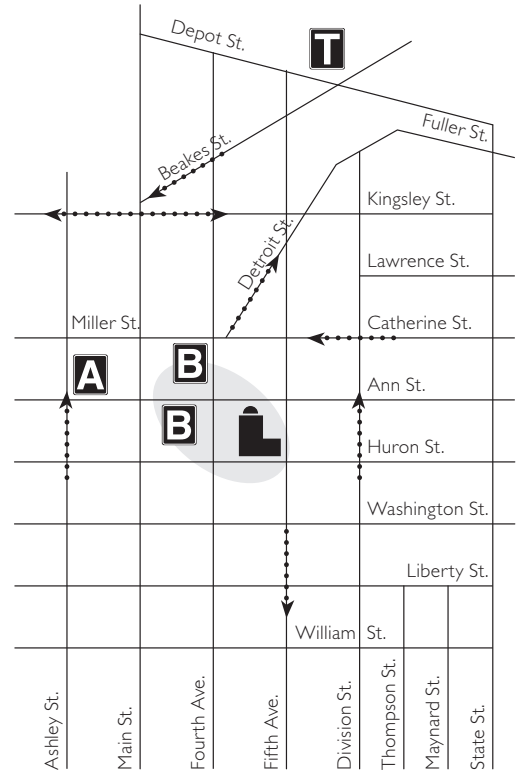
Groups may use the curb-cut area in front of the Museum to drop off their scouts and at least one adult before parking their cars.

## Weekend Parking Suggestions\*

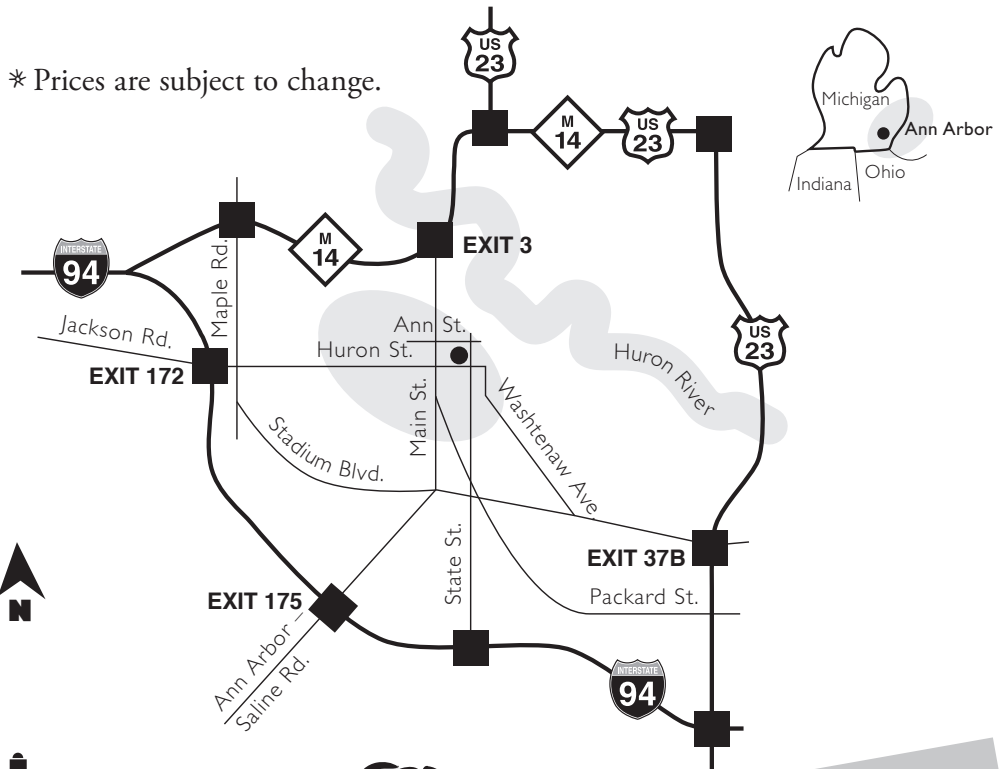
- Ann/Ashley Parking Structure – \$2 per day (Exact change only.)
- County Surface Lots – free (County surface lots fill quickly. Allow extra time and provide drivers with an alternate parking area if you plan to park in one of these lots.)

## Weekday Parking Suggestions\*

- Ann/Ashley Parking Structure – hourly rate



\* Prices are subject to change.



- the Museum
- one-way street
- train station
- Ann/Ashley parking structure
- County surface lots



**For More Information**  
 Visit Our Website  
[www.aahom.org](http://www.aahom.org)  
 Contact the Scout Coordinator  
 734-995-5439  
 or [education@aahom.org](mailto:education@aahom.org)