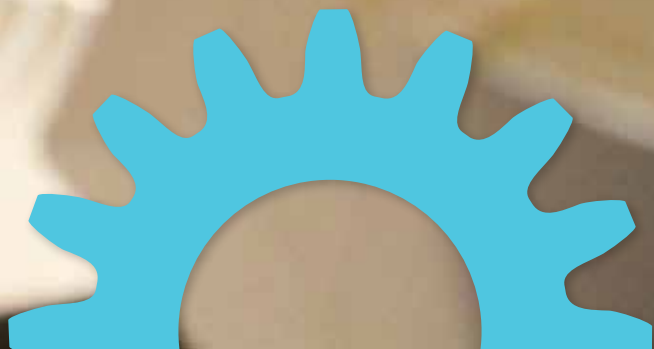


EXPERIMENTAL
EXPLORE
SCIENCE & IMAGINATION
2013
ANNUAL
REPORT



10.1.2012 to 9.30.2013





DEAR HANDS-ON MUSEUM FRIENDS,

In this annual report you will read about public and education programs, events, and exhibits. You'll see how donors make a major impact, such as the continued investment of the Bob and Jan Lyons Foundation in the Lyons Country Store Exhibit.

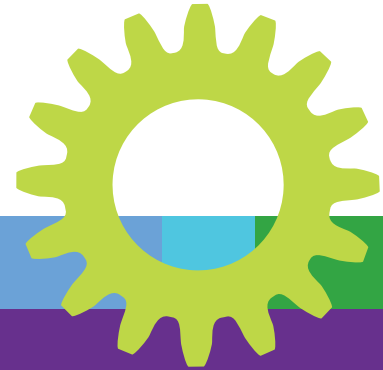
It is my honor to have been chair of the Museum's Board of Trustees these past two years. In that time, I have watched attendance climb to a record high and, more importantly, seen the growth in new programs and activities for visitors of all ages. Our two landmark annual events, *Creature Feature* and *TechTwilight*, continue to attract new sponsors and participants.

How can you help? One area of ongoing need is the *Discover Science Assistance Fund*. This fund subsidizes field trips to the Museum, as well as outreach and distance learning programs on-site at schools. With ongoing school budget cuts, we are seeing record numbers of requests for subsidies for these Museum education programs. In the past fiscal year, almost 12,000 students, teachers, and chaperones benefited from donations to this fund.

We also need support for programs and exhibits at the Museum. Next year we'll be installing a major new water exhibit, *H2Oh!* and developing new programs about water consumption and environmental science. Your gift will have an impact on the more than 250,000 visitors a year who make the Ann Arbor Hands-On Museum one of the most popular destinations in Michigan.

Thank you for your ongoing support of our mission to inspire people to discover the wonder of science, technology, engineering, art, and math (STEaM)!

Michelle Crumm
Chair
Board of Trustees 2011-2013



DEAR FRIENDS AND SUPPORTERS OF THE MUSEUM,



Have you ever made an ice candle, slime, or a roller coaster? If the answer is yes, then chances are that you, along with thousands of other Museum visitors, have participated in one of our many programs on site, or in an outreach or distance learning program off site, over the past year. Every day, the Museum is filled with people of all ages from all backgrounds

who want to learn more about STEaM in an environment that is inquiry-based, content-rich, and fun.

I continue to be gratified by the efforts of our talented and dedicated team towards ensuring that the Museum remains a place of learning, inspiration, discovery, and wonder. Our educators offer ScienceWorks labs for school groups who visit the Museum on field trips. They also travel all over Michigan, delivering outreach programs to students and families at schools, libraries, and festivals. Our distance learning program reaches schools throughout the U.S., Canada, and several other

countries. Our exhibits team continues to design and build innovative new exhibit experiences while tweaking, repairing, and enhancing already popular exhibits throughout our facility.

Our community continues to be a tremendous source of innovation and expertise. For example, we are working with NovoDynamics and TorranceLearning to install radio frequency ID tags (RFID) in our exhibits so that we may provide enhanced education content. We have launched new collaborations with Leslie Science & Nature Center and the Department of Child and Family Life at C. S. Mott Children's Hospital to provide hand-in-hand learning experiences.

You can keep up-to-date on Museum programs, events, and exhibits by visiting our website, www.aahom.org, or our Facebook page. Like me, you will be amazed by what is going on here every day!

Mel J. Drumm
President and
Executive Director





EDUCATION: HERE, THERE AND EVERYWHERE!

This year, Museum educators created and launched many new programs and formats for hands-on learning, including a pilot Thursday evening workshop for families, a pirate-themed water program for distance learning classes, and several outreach Family Night activities, including inversion goggles to understand brain and motor connections.

Outreach staff led workshops and tabletop activities in libraries, schools, and festivals throughout Michigan. Our Upper Peninsula tour in the early summer is an annual highlight of these efforts.

Another highlight for the team was a successful in-depth series program resulting from collaborations with community designers. This two-week program connected science and art in a new way. A temporary exhibit installation was hosted by a West Bloomfield, Michigan school and Museum staff led classes through the exhibit, as well as in workshops focusing on science, art, and literacy concepts.

Distance learning, our interactive videoconferencing program, has connected with classrooms across 40 states this year. Over the summer, we welcomed back (virtually) our Australian classroom connection, one of the many schools outside of the U.S. that participates in our programs. Our videoconferencing experts traveled to San Antonio in June to the International Society of Technology in Education Conference as co-planners of an interactive session.

On-site, we delivered 545 ScienceWorks labs for school groups visiting on field trips. These 50 minute hands-on programs align with Michigan Grade Level Content Expectations (GLCE) and Next Generation Science Standards.

With nearly 1,300 school programs delivered over the course of the year, the Museum has made a large impression on the learning and engagement of young people in Michigan and across the world.

The best thing was how it reinforced concepts taught in class. Sixth grader Kenny asked, "Wow! Why can't school be like this ALL the time?" I would say that's proof they loved it.

Allen Park Middle School in Ann Arbor

WHAT'S NEW IN EXHIBITS? A LOT!

Lyons Family Supports Upgrades to Country Store

Having supported the Museum since its very beginning, the Lyons family's most popular contribution is the Lyons Country Store. This exhibit contains shelves of items, personally collected by Bob Lyons, including toys, games, hardware, and home goods that generations of shoppers might have found in their own local general stores.

Most recently, with inspiration and funding from the Lyons family, we expanded the Store and filled the new addition with holographic-like scenes using actors in period dress depicting what it was like to be in a country store in the 1930s.

Michigan Nature

The James A. & Faith Knight Foundation and Ann Arbor Area Community Foundation have supported the Museum with grants over many years. Their most recent grants supported both exhibits and programs for the Michigan Nature gallery. The first exhibit to be completed, "Michigan Basin: At the Bottom of Michigan Nature," was developed by repurposing our popular climbing wall to depict regional geology. University of Michigan Professor Henry Pollack provided valuable geological expertise to design this exhibit. We are currently developing a microscope exhibit to view small organisms from Michigan, and Leslie Science & Nature Center has added nature exhibits to the space. This project was also supported by the Carroll J. Haas Foundation.

Blast Off – It IS Rocket Science

This new floor-to-ceiling exhibit lets visitors experiment with launching compressed air bottle rockets. They can control the air pressure and since there are two rockets, visitors can experiment with different launch techniques. Professor Mark Moldwin and students from the U-M Department of Atmospheric, Oceanic and Space Sciences assisted with this exhibit.

The gym was jumping. The atmosphere was energetic, fun-filled and there was lots of laughter with all the stations. Don't do anything differently!

St. Stephen Elementary School in Saginaw





CREATURE FEATURE AND TECH TWILIGHT



Creature Feature 2013

Creature Feature continues to be one of our most popular annual events--this year it was sold out two weeks beforehand! We added an extra hour to give our 800 visitors more time to explore the astonishing array of live animals provided by the Creature Conservancy, Leslie Science & Nature Center, Little Creatures Company, Noah's Team of Ann Arbor, Washtenaw County 4H, Great Lakes Zoological Society, and Jane Levy, the Beekeeper. New this year was a veterinary demonstration with All Creatures Animal Clinic.

We want to thank our generous sponsors who donated dollars and in-kind goods, and to our volunteers who make this event such a success:

Ann Arbor Pediatric Dentistry
Ann Arbor State Bank
Arbor Brewing Company
Brain Monkeys
The Broken Egg
Goldfish Swim School
William Gosling

Kohl's
Kumon of Ann Arbor East and West Center
Lake Trust Credit Union
Lindamood-Bell Learning Processes
Macy's

Pet Supplies Plus
Print-Tech
Janet and David Shier
Switchback
Wags to Wiskers Pet Supplies
Westarbor Animal Hospital
Willis & Jurasek CPA

TechTwilight 2013

TechTwilight continues to attract new sponsors, exhibitors, and student groups who celebrate invention, innovation, and entrepreneurship. It serves the Museum's mission to engage students in STEaM learning. Preparing projects and demonstrations for an event like TechTwilight builds confidence in problem-solving skills and encourages creativity. For example, Summers-Knoll School demonstrated technical wizardry and a Ping Pong cannon. Clonlara students showed how complex shapes can be made from folding paper plates. Students from Stockbridge Elementary School brought in water tanks to demonstrate underwater remotely operated vehicles, a program that they have taken all over the world.

Thank you to the sponsors who made this event possible!

Ann Arbor SPARK
Ann Arbor State Bank
BD Accuri Cytometers, Inc.
Bank of Ann Arbor
Compendia Bioscience
Concentrate Media
Jenn Cornell PR
Cornerstone Design, Inc.
Daycroft Montessori
ECO PHYSICS
ForeSee Results
Google

Hylant Group
Intersect Digital
Kris Korvun & Amanda Long
MC3
Maker Works
Meadowlark Builders
Mechanical Simulation Corps
Menlo Innovations
Michigan Virtual Charter Academy
Miller Canfield
NSF International

Novodynamics
NuStep
PWB Marketing
Plante & Moran
Red Hen, LLC
Rehmann
Rotary Club of Ann Arbor
Square One Education Network
Terumo CVS
Torrance Learning
Zingerman's Mail Order



PUBLIC PROGRAMS ENHANCE THE VISITOR EXPERIENCE

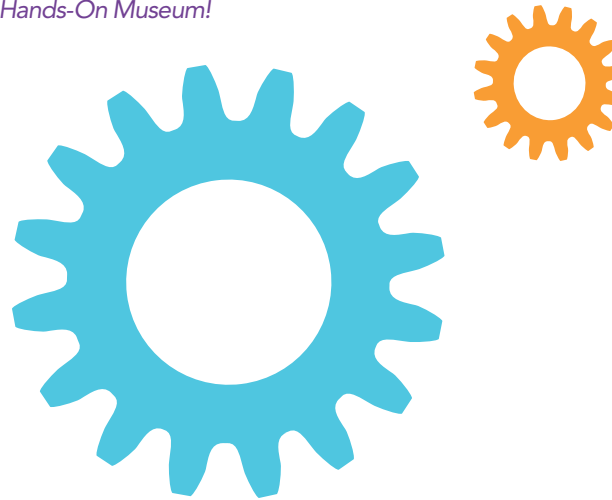
Our public programming covers a wide variety of topics and is most often conducted through partnerships with community collaborators and organizations. Together, we expand the visitor experience to include an in-depth look at real science, technology, engineering, and math innovation occurring throughout our community.

Some of this year's highlights:

- 11,000 visitors participated in "Hands-On Holidays: Hot vs. Cold" over the Winter vacation
- Spring break activities on the theme "Galactic Getaway" set a record of 12,000 visitors in 10 days
- Preschool Story Time expanded from Tuesday mornings at 9 a.m. to Saturday mornings at 10:30 a.m. A grant from a local family foundation supported staffing, books, materials and supplies, and performers. This program encourages family science learning for our youngest visitors.



Two weekends a month, our visitors participate in lively, interactive science demos by Professor Ray's Everyday Science, sponsored by The Benard L. Maas Foundation. Topics include Chemistry, Good Vibes, Air Apparent, Luminosity and Mighty Motion. This year marked Professor Ray's fifth year working with the Ann Arbor Hands-On Museum!



VOLUNTEERS HELP IN SO MANY WAYS!

More than 500 volunteers enhance our community impact by donating over 3,300 hours annually to deliver public programs, help with special events, give advice on technology initiatives, and provide invaluable exhibits expertise. They come to us from local businesses like PNC and Google, college and university student groups (EMU, WCC and U-M), local high schools, and community members.



Walter has been volunteering at the Museum for many years and is our #1 good will ambassador. He walks around the galleries greeting visitors, directing them to exhibits and answering questions. Walter is especially helpful with school groups, as you can see in the following letter!

Dear Mr. Walter,

Thank you taking the time to volunteer at the Hands On Museum. Thank you for showing our class the wonderful exhibits the museum has to offer. Your information and explanations were extremely helpful. Thank you for all of your kindness. We are so thankful for wonderful people like you who take the time to help and teach children. Your thoughtfulness made our visit to the Hands On Museum even that much better!

Your Friends,
Mrs. Mehrhof and her Kindergarten Class at Miller Elementary in Dearborn

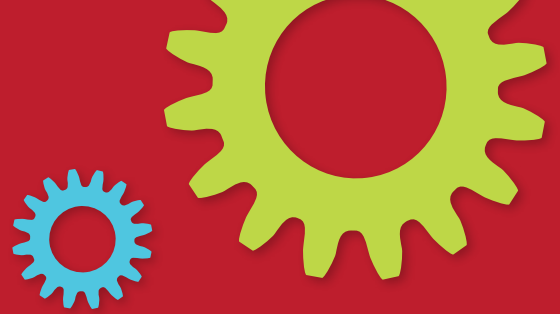


Alan Singer was a volunteer at the Museum from 1996 through 2013. During that time, he checked, reported on or repaired nearly every exhibit in the Museum. One lasting legacy of Alan's time here is the Hearing Frequency exhibit in the All About You Gallery.



Every spring, University of Michigan Society of Physics Students present a series of hands-on activities and demos for PhysicsPalooza. From static electricity to gyroscopes to the ever-popular fire tornado, this is a do-not-miss event!

FINANCIAL OVERVIEW



FINANCIAL OVERVIEW 2012-2013

Balanced Annual Budget of \$2.4 million helps support:

- 263,199 annual visitors
- 18 full-time staff members
- 40 part-time staff members
- 281 birthday parties
- 5,069 memberships
- 3 Members' Nights events
- 224 Distance Learning programs
- 543 Outreach programs

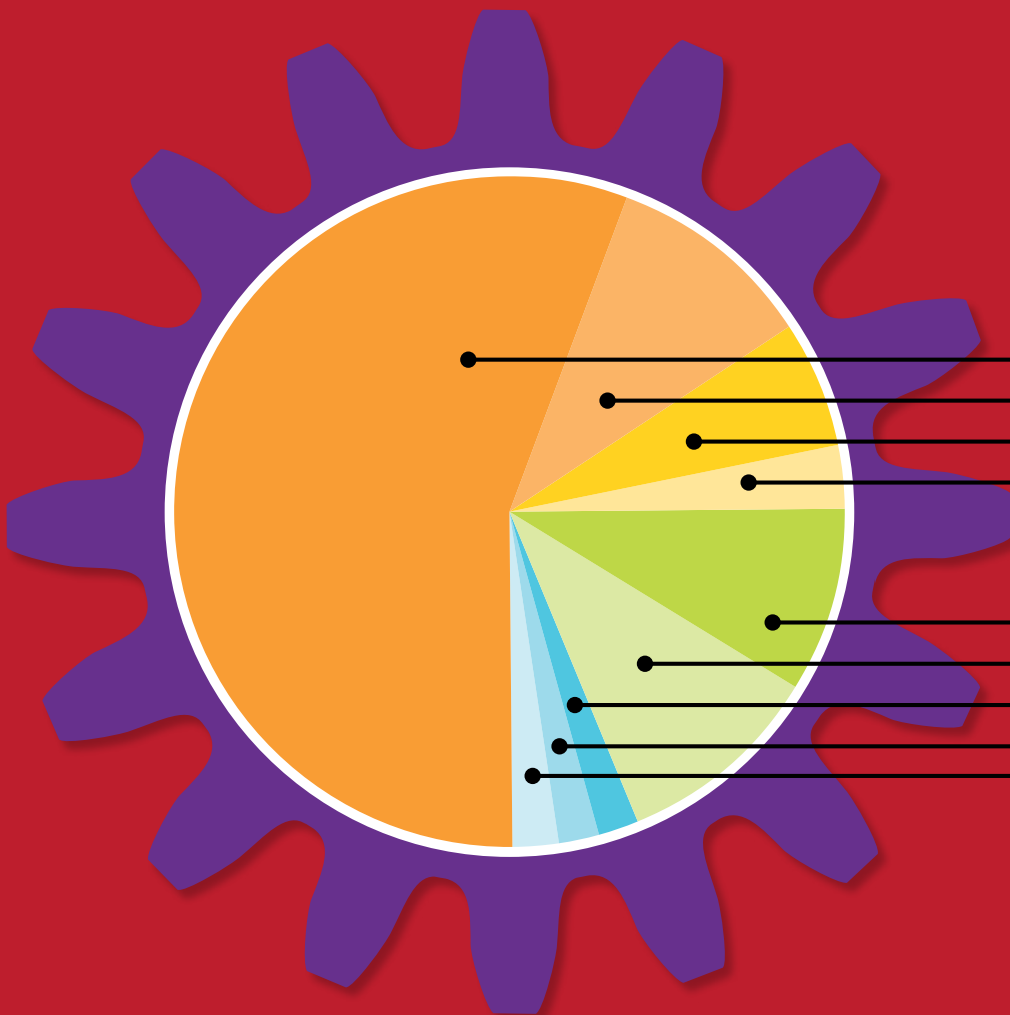
WHERE THE \$2.4 MILLION COMES FROM

75% Earned Revenue:

- 56% Memberships & Admissions
- 10% Education Programs
- 6% Gift Shop Net
- 3% Other Revenue

25% Community Support:

- 9% Restricted Donations
- 10% General Operating Donations
- 2% Government Grants
- 2% Special Events
- 2% In-Kind





DIRECTORS 2012-2013

Mel Drumm,
President and Executive
Director

John Bowditch,
Director of Exhibits Emeritus
Ann Hernandez,
Director of Programs

Carol Knauss,
Director of Operations
Ann Neuenschwander,
Director of Development*

Peggy Pietras,
Director of Finance
Charles Stout,
Director of Exhibits

* Ann retired in January 2014 after 10 years as Director of Development.

ANN ARBOR HANDS-ON MUSEUM BOARD OF TRUSTEES 2012-2013

Michelle Crumm, *Chair*
CEO/Owner Present Value

Emily Palacios, *Vice Chair*
Attorney, Miller Canfield
Paddock and Stone, PLC

Kristen Holt, *Treasurer*
COO, United Way for
Southeastern Michigan

Megan Torrance, *Secretary*
President, TorranceLearning

Michael Cole, *Member at Large*
Technology Industry Group
President, Bank of Ann Arbor

David Esau, *Member at Large*
Architect, Cornerstone Design,
Inc.

William Gosling, *Member at Large*
University Librarian Emeritus,
University of Michigan

Gina Finney
Human Resources Manager,
Aernnova Engineering US, Inc.

Nicholas Ford
Student, Ann Arbor Huron
High School

Cynthia L. Gardner
Senior Vice President/Regional
Manager, PNC Bank

Robert Hagood
Physics Instructor, Washtenaw
Community College

Donald Loppnow
Professor, Eastern Michigan
University

Dianne Marsh
President, SRT Solutions

Timothy McKay
Professor of Physics and
Astronomy, University of
Michigan

Henry Pollack
Professor Emeritus of
Geophysics, University of
Michigan

Keith Riles
Professor of Physics, University
of Michigan

Thomas Root, Jr.
President, Owner, Zingerman's
Mail Order

Christine Sing, CPA
Principal, Rehmann

William Wood
Management Consultant

Karl L. Zinn
Research Scientist Emeritus,
Information Technology,
University of Michigan

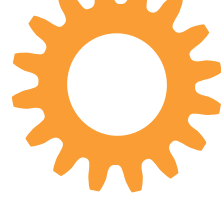
COMMUNITY COLLABORATORS

The Ann Arbor Hands-On Museum collaborates with organizations throughout the community. These partners provide resources and expertise that expand and enhance our visitor experience. We gratefully acknowledge our colleagues in academia, the non-profit sector, and businesses throughout the community that join with us year after year to reinforce the Museum as a premier informal learning and gathering destination. Our partners include:

All Hands Active
Ann Arbor Area Community
Foundation
Ann Arbor Art Center
Ann Arbor Community
Recreation & Education
Ann Arbor Downtown
Development Authority
Ann Arbor Summer Festival
Ann Arbor Symphony Orchestra
Artrain
Bank of Ann Arbor
C. S. Mott Children's Hospital -
Child & Family Life
Child Care Network
Community Action Network
Community Television Network,
Ann Arbor

Consortium for Space Science
Education
DTE Energy Foundation
Endpoint (Liquid Galaxy)
Food Gatherers
Google
Huron Valley Ambulance
Leslie Science & Nature Center
MakerWorks
Menlo Innovations
Michigan Theater
NASA
NOAA
NovoDynamics
NSF International
NuStep
PNC Bank: Grow up Great
Red Hen LLC
SRT Solutions

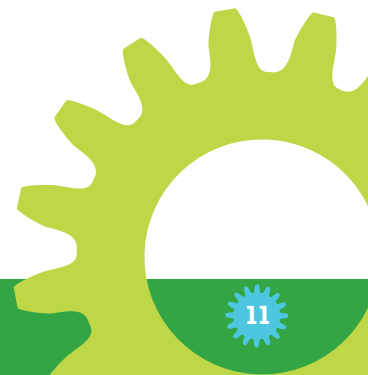
Schokolad
The Flying Toasters Robotics
Club
Toledo Zoo
TorranceLearning
Toyota Technical Center
U-M Alpha Phi Omega
Fraternity
U-M Circle K
U-M Matthaei Botanical
Gardens & Nichols Arboretum
U-M Department of
Atmospheric, Oceanic and
Space Sciences
U-M Department of Psychology-
Living Lab
U-M Department of Physics
U-M Society of Physics Students
WA2HOM
Weather Underground



DONORS OCTOBER 1, 2012 – SEPTEMBER 30, 2013

Anonymous	Jean Dickinson	Sharon & P. Landis Keyes	Museum of Science Boston	Susan Smith & Robert Gray
A-1 Rental	Molly Dobson	Terrance & Sharon Keys	Tom & Barbara Nanzig	Richard & Susan Snyder
Accuri Cytometers Inc.	Domino's Pizza LLC	Tom & Connie Kinnear	Ann & Norm Neuenschwander	Square One Education Network
Patty & Rob Aldrich	Downtown Home & Garden Inc.	Kiwanis Club of Ann Arbor	NovoDynamics Inc.	Gloria Stapp
John & Sallie Anderson	Mel & Elizabeth Drumm	James A. & Faith Knight Foundation	NSF International	State Street Area Association
Kevin B. Anderson	DTE Energy Foundation	Kohl's of Ann Arbor	NuStep, Inc.	Kati & Eric Stoermer
Ann Arbor Credit Bureau, Inc.	Bruce & Joyce Dwiggins	Alan & Jean Krisch	Omenn-Darling Family Advised Fund	Charles Stout & Carol Knauss
Ann Arbor Pediatric Dentistry	Jane Eisner	Rong Kuang	Mark and Susan Orringer	John & Janet Talbot
Ann Arbor SPARK	Bruce & Cheryl Elliott	Susan Lackey & Steve Daut	Grace & Marshall Overlander	Terumo CVS
Ann Arbor State Bank	David & Jill Esau	John & Peggy Laird	Oxford Companies	Doris Terwilliger
Ruth Aprill	Joseph & Lisa Fazio	Lake Trust Credit Union	Emily & John Palacios	Sandy Toivonen
Argiero's Italian Restaurant	Mason Ferry	Alice Landau	Panasonic Automotive Systems Company of America	TorranceLearning
Valerie & Chris Babin	Margaret Fillion	John S. Lesko Jr.	John Griffiths Pedley & Mary Pedley	U-M Dept. of Astronomy
Tom & Sarah Baird	Phillip and Elizabeth Filmer Memorial Charitable Trust	LimnoTech Inc.	Peysen Foundation for Population Health	U-M Dept. of Atmospheric, Oceanic & Space Sciences
Milton & Ruthanne Baker	Thomas Finholt & Stephanie Teasley	Lindamood-Bell Learning Processes	Peggy Pietras	Charlie & Ann Unbehaun
Bank of Ann Arbor	Gina & Michael Finney	Robin & Rod Little	Mark & Jen Pinto	United Way
BD Accuri Cytometers Inc.	Michael Fitzsimmons & Hope Haefner	Amanda Long & Kristopher Korvun	Plante Moran	Rob & Tanja Van der Voo
Harry & Kathryn Benford	Joe & Beth Fitzsimmons	Donald & Nancie Loppnow	Plum Market	Richard & Vickie Van House
Donald & Gene Bennion	Nicholas Ford	Loy, Hartley & Company	PNC Foundation	Douglas & Andrea Van Houweling
Stanley & Joy Berent	Lisa & William Ford	The Bob and Jan Lyons Foundation	Debra Polich & Russell Collins	J. S. Vig Construction Company
Dale & Peggy Berry	ForeSee Results	Benard L. Maas Foundation	Henry & Lana Pollack	Wags to Wiskers Pet Supplies
Elaine Besh	Tim & Stephanie Freeth	Macy's	William & Linda Powers	Washtenaw Community College
Carolyon Beuhler	Gargi French	Maker Works	Print-Tech Inc.	Brian Weatherson & Ishani Maitra
Andrew Biteen	Francelle Fulton	Martin Family Foundation	PWB Marketing	Deborah & Michael Weber
Thomas Blaske & Mary Steffek Blaske	John & Martha Fyfe	Paul & Kathy Marx	Quantum Signal LLC	Doug & Sue Weber
Brain Monkeys	Cynthia & David Gardner	MC3 Inc.	Momoko & Durgesh Rai	Milton & Janet Weidmayer
Leah Bricker	Goldfish Swim School	MCACA	Rohini Rebello-D'Souza & Andre D'Souza	Gabriel Weinreich
Broken Egg	Suzanne Goodrich	John McCauley & Virginia Weingate	James & Bonnie Reece	Ambassador Ronald & Eileen Weiser
Buhr Foundation	Google Inc.	Griff & Pat McDonald	Rehmann	Westarbor Animal Hospital PC
Burt Forest Products Co.	William & Jean Gosling	Tom & Lisa McKarns	Duane & Kathryn Renken	Robert & Marina Whitman
Toby & Judy Burt	Carroll J. Haas Foundation	Timothy & Aprille McKay	Susan & Tony Reznicek	Whole Foods Market
Susan & Oliver Cameron	Deborah Haller	Bill & Ginny McKeachie	Kathleen & Douglas Rhine	Cynthia & Roy Wilbanks
Leo & Noreen Carrigan	Hamzavi Foundation	Meadowlark Builders LLC	Susan & Keith Riles	Willis & Jurasek CPA
Carol Chan-Groening & Terence Groening	K. Larry Hastie	Mechanical Simulation Corporation	Brian & Megan Roether	Bill & Pam Wood
Children's Orchard	Emily Heintz	Menlo Innovations LLC	Tom Root & Antoinette Morell	Zingerman's Community of Businesses
Michael & Marie Cole	Carrie & Michael Holt	Len & Terri Middleton	Rebecca T. Ross	Zingerman's Mail Order
Compendia Bioscience	Kristen & Glenn Holt	ET Michael & Elizabeth Miller	Rotary Club of Ann Arbor	Frank & Ruth Zinn
Concentrate Media	Hopp Electric Inc.	Miller, Canfield, Paddock & Stone PLC	Perry Samson & Deborah Gibson	Karl & Ann Zinn
Howard & Anne Cooper	Tom & Ann Hunt	Soni Mithani & Jeff Morenoff	Dick & Norma Sarns	
Jenn Cornell PR	Huron Pet Supply, Inc.	John Monnier & Andrea Zemgulys	Charles & Judith Schlanderer	
Cornerstone Design, Inc.	Huron Valley Ambulance	David Moreland	Bill & Laura Schlecte	
Costco of Pittsfield Township	Hylant Group	Michael D. & Leslie Morris	Erik & Carol Serr	
Mary Ann Crawford	Intersect Digital LLC	Margaret Mouzon	David & Janet Shier	
Michelle & Aaron Crumm	Brad & Amanda Jacobs	Roy & Susan Muir	Eric & Chris Sing	
CultureSource	Jerrold M. Jung	Bil Mundus	Mandeep Singh & Sangeeta Kaur	
CVS Pharmacy	Susan & Doug Karsch			
Daycroft Montessori	Helen L. Kay Charitable Trust			
David L Debruyin	David & Sally Kennedy			
Dickinson Area Community Foundation				

If there are any errors or omissions, please email development@aahom.org.





220 East Ann Street
Ann Arbor, MI 48104
www.aahom.org

